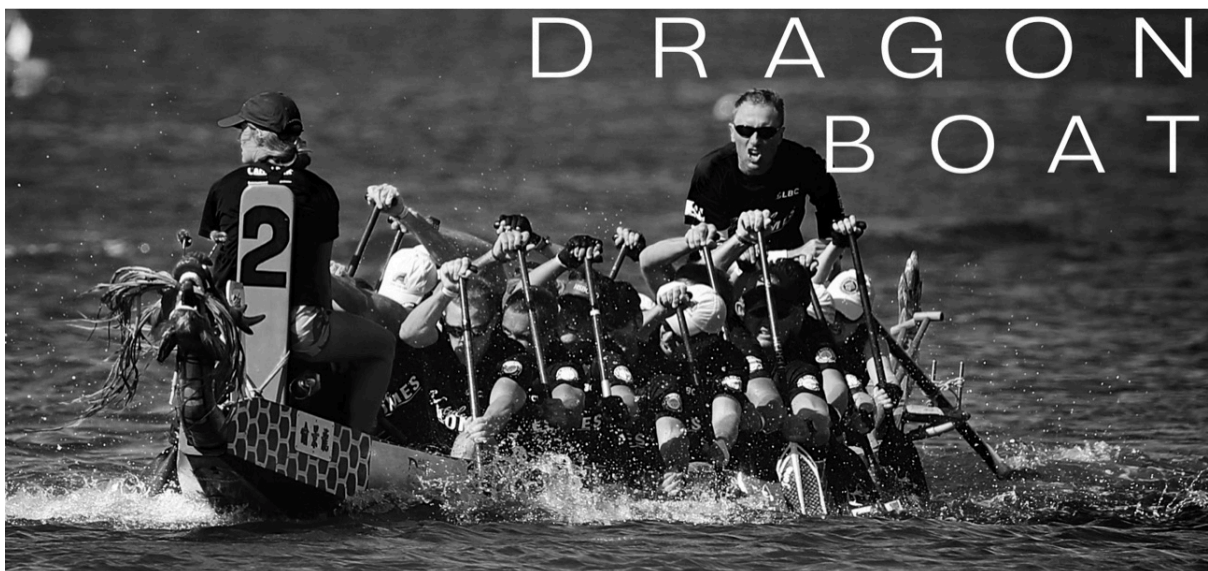




# MAURITIUS PADDLING ACADEMY



This handbook has been prepared to familiarise new and continuing members with the activities of Mauritius Paddling Academy, and all the guidelines and expectations for paddlers.



# General Statement

## Operation and Locations

---

### Operation

Mauritius Paddling Academy offers dragon boat and outrigger paddling opportunities for members at novice, recreational and

---

### Locations

Mauritius Paddling Academy operates from multiple locations around Mauritius. Those locations currently being:

- Port Chambly
- Coming soon, Flic en Flac
- Pointe Jerome Youth Centre

Additional locations are identified as required, from time to time.

## Purpose and Mission

---

### Purpose

- The purpose of Mauritius Paddling Academy is to deliver impactful and sustainable access and inclusion in water sports and physical activities for all members of the community.
- To promote the sport of outrigger canoe and dragon boat paddling through programs that include racing and recreational paddling for adults and youth.
- Mauritius Paddling Academy promotes respect for the ocean, community, and family, and encourages teamwork using the outrigger canoe, dragon boat and the culture they embody to accomplish these objectives.
- Membership is open to anyone (subject to a minimum age of 18) regardless of age or sex and is valid after payment of dues. Members are eligible to participate in coached sessions, races, and recreational paddles.



---

## Mission

- The mission of Mauritius Paddling Academy is to inspire people to pursue a passion for paddling; for health, enjoyment, friendship, challenge and achievement.
- To perpetuate and enhance the culture and lifestyle of outrigger and dragon boat paddling with integrity and respect for the community, traditions and evolution of the sports. Key tenets of our mission include the following:
  - Maintain and perpetuate outrigger and dragon boat culture and competitive paddling;
  - Teach, train, instruct, and expose, children, men and women to the ancient art, craft, and history of outrigger and dragon boat paddling;
  - Provide the means and facilities for activities which foster the development and maintenance of strong and healthy minds, bodies and spirits among all people;
  - Provide opportunities for the interaction and communion of people in the interest of mental and social well-being; and
  - Perpetuate and sustain outrigger canoe paddling as a true expression of Aloha to the friends and family of Mauritius Paddling Academy and the community and visitors of Mauritius.



# Terms & Conditions

## Membership

You agree to comply and be bound by Mauritius Paddling Academy Membership Terms and Conditions, Mauritius Paddling Academy Rules & Regulations and Disclaimers for all facilities.

---

### Application

- All applications for membership in the Academy shall be made online or by downloading the application form via the Mauritius Paddling Academy website;
- Completion of all required forms and payment of all required dues and fees shall qualify an individual for membership in the Academy, with all attendant rights and privileges, for the selected paddling time period.

---

### Membership Benefits

- A minimum of 1 paddling sessions will be offered per week.
- Membership includes participation of paddling programmes (see below) plus racing and one off events
- Membership includes participation at any paddling session offered at Mauritius Paddling Academy locations around the Island.
- Sessions are made available via TeamApp for members to sign up to attend.

---

### Restriction of Membership;

- The Academy may, at any time, restrict the number of Members in any category of membership;

---

### Suspension of Membership

- Mauritius Paddling Academy may, at any time by notice in writing, immediately suspend your membership and exclude you for a period of time which Mauritius



Paddling Academy in its discretion considers reasonable, if you breach any term of this agreement, including without limitation:

- Breaching the Terms & Conditions, Rules and Regulations, or any other rules and conditions imposed by Mauritius Paddling Academy, or any other lawful and reasonable direction of Mauritius Paddling Academy;
- Carrying out any offensive, threatening, inappropriate, dangerous or illegal activity during Mauritius Paddling Academy paddling sessions
- During a period of suspension all payments owing by you to Mauritius Paddling Academy under this Agreement must be made. You will not be reimbursed for any period of your membership missed or lost due to a suspension.

---

### Freezing your membership

- Freezing of memberships will be considered in special circumstances related to permanently leaving Mauritius, acute injury, or onset of an existing or undiagnosed medical condition.
- Requests can be directed to Mauritius Paddling Academy at [chris@mauritiuspaddlingacademy.com](mailto:chris@mauritiuspaddlingacademy.com)

---

### Termination of Agreement

- Mauritius Paddling Academy may, at any time, terminate this agreement immediately by giving you notice in writing if you breach any term of this Agreement, including but not limited to:
- Breaching the Code of Conduct & Ethics, any other rules and conditions imposed by Mauritius Paddling Academy, or any other lawful and reasonable direction of Mauritius Paddling Academy;
- Carrying out any offensive, threatening, inappropriate, dangerous or illegal during Mauritius Paddling Academy paddling sessions;
- You have a right to terminate this agreement. Mauritius Paddling Academy will not refund any membership fee(s) unless for good reason;
- You may terminate this agreement on 30 days' notice in writing if you are relocating permanently to reside outside Mauritius, or a medical condition has developed that inhibits participating in physical activity and is verified by a practitioner, on appropriate evidence of this being provided to Mauritius Paddling Academy. The amount paid by the member for the period after the membership has been terminated will be refunded by Mauritius Paddling Academy to the member;



- Members who change their mind about being a Mauritius Paddling Academy member after they have paid for a membership are not entitled to a refund.

## Dues

---

### Payment

- Members shall pay monthly, 6 monthly or annual dues as set by Mauritius Paddling Academy.
  - Provisional Members may attend up to two practices to decide if they like the sport and wish to continue with the Academy at which point full payment of membership dues will be paid.
- Membership dues paid by each class of member are considered to be non-refundable.
- Dues for all classes of membership shall be set by Mauritius Paddling Academy on an annual basis.
- Payment of dues shall be made prior to receiving any of the Academy's privileges and services, including participation in races.
- If a member fails to make payment of the dues, he/she may be barred from further participation in Academy practices, races, activities, and meetings until such payment is made.
- All payment must be made via direct debit / standing order, or can be paid by cash if it is a one-off activity.

---

### Payment Options Explained

For each of the payment options set out below, please be aware that the fees could change. The types of payment options we offer are as follows:

- Direct debit / Standing Order annual or 6 monthly membership.
  - With this payment option, you commit to being a member, and paying the membership fee, for a minimum of 6 or 12 full calendar months.
  - The more months you commit to, the cheaper the monthly rate. In return for this, you get a discounted monthly membership fee for the 6 or 12 full calendar months.
  - At the end of the 6 or 12 calendar months, your membership will stop, which means that you will have to renew in order to continue paddling.



- The upfront 1 month membership.
  - With this payment option, you commit to being a member for 1 full month and to pay your membership fee upfront when you join or renew.
  - Under this payment option, during your commitment period you will not be able to cancel your membership.
  - After your chosen membership period has ended, your membership will stop, which means that you will have to renew in order to continue paddling.
  - Payment can be made by cash, cheque, or Juice.

#### Bank Payment Details

Bank Name: Mauritius Commercial Bank Ltd  
Account Name: Agile Concepts & Sports Ltd  
Account Number: 000447800531



# Rules & Regulations

---

## Member Code of Conduct & Ethics

Mauritius Paddling Academy is committed to providing an inclusive culture based around sporting and social pursuits and appreciates and recognises that all people are valuable and should be respected for their individual abilities. Mauritius Paddling Academy treats all members fairly and equally. Mauritius Paddling Academy will not tolerate any form of harassment and will not tolerate any forms of discrimination on the basis of gender, religion, race, nationality or ethnic origin, cultural background, social group, disability, sexual orientation, marital status and family status, age or political opinion. To that end the Member Code of Conduct & Ethics requires all relevant persons to behave with courtesy and respect towards everyone encountered in the course of their dealings with Mauritius Paddling Academy.

- This code of ethics is as follows:
  - All members are expected to treat all fellow members and the general community with respect, honesty, and fairness. This includes showing respect for oneself, other members, coaches, the public, the environment (especially the ocean), the sport and culture of outrigger canoe and dragon boat paddling, fellow competitors, mauritius Paddling Academy equipment and property.
  - All members are required to be involved in Academy activities and events. For example, volunteer to help races and events (set up/take down tents, handle canoes / boats, and stay to watch and support fellow paddlers' races), and participate in fund-raising events and activities.
  - Members are encouraged to strive to achieve their personal best both physically and mentally and support others in this effort.
  - Violence or physical or verbal abuse is unacceptable and grounds for suspension or expulsion.
  - Members are encouraged to keep the best interest of Mauritius Paddling Academy and the team before their personal aspirations.





---

## Member responsibilities

- Members, families, guests, spectators and users shall abide by all policies of Mauritius Paddling Academy, which may also be amended from time to time.
- Instructions from Mauritius Paddling Academy staff must be followed at all times.
- If any member suffers an accident or injury whilst on the premises, it and its circumstances must be reported immediately to the duty administration.
- Users shall promptly report to a Staff any defect noted in the operation of any equipment and/or facilities.

---

## Use of Social Media

- Mauritius Paddling Academy uses various forms of social media to promotional activities and to encourage and boost participation. Whilst Mauritius Paddling Academy encourages all members to contribute to social media to boost the Mauritius Paddling Academy image it must be noted that members and / or their guests should not use any social media tools in any way which will bring Mauritius Paddling Academy into disrepute, disclose confidential information, interfere with the privacy of members and/or their guests or breach any applicable laws or regulations.

---

## Accident and Injury

- Mauritius Paddling Academy management will not be responsible for any harm you may suffer as a result of taking part in any activity on our facilities in any areas unless it is caused by our negligence.
- It is expressly agreed that all use of the Mauritius Paddling Academy facilities shall be undertaken at the member's sole risk, and Mauritius Paddling Academy shall not be liable for injuries or damages to members or guests, including, without limitation, those injuries or damages resulting from acts of active or passive negligence on the part of Mauritius Paddling Academy, its owners, officers, employees or agents. Each paddler, for himself/herself and family members, and on behalf of his/her executors, administrators and assigns, expressly releases and forever discharges Mauritius Paddling Academy, its successors and assigns, as well as its owners, officers, employees and agents, from all such claims, injuries, damages, actions or causes of action.
- If any member (or other user) suffers an accident or injury whilst on the premises, it, and its circumstances must be reported immediately to Staff.



---

## Personal property

- Personal property should be respected at all times. Personal items left or temporarily stored are the responsibility of each individual member. Mauritius Paddling Academy accepts no liability for damages or theft of equipment, or members' or guests' personal property including backpacks, clothing, paddles or other items that are stored at members' own risk.
- Unidentified lost items or items stored without authorisation can be donated to worthy causes or auctioned off to offset the costs incurred by Mauritius Paddling Academy.

---

## Events or Competitions

- Paddlers, Spectators, Organisers and Officials are responsible for themselves and their property, and Mauritius Paddling Academy is not liable for loss, damage or ill health caused by actions carried out.
- 
- All Rules & Regulations are applicable to any users, members, visitors or guests, who attend events, competitions or otherwise. It is a condition of entry that implies that all users agree to the Rules and Regulations set by Mauritius Paddling Academy.

---

## Operating hours

Mauritius Paddling Academy will be open year round with the exception of possible closings or reduced hours on public holidays or unless otherwise decided by Management.

- Mauritius Paddling Academy may, from time to time and without prior notice, change the operating hours, close all or certain facilities temporarily, restrict the number of persons having access, and/or suspend or cancel any activity if management considers the circumstances require.

---

## Closure of facilities

- From time to time, the Mauritius Paddling Academy may have to or choose to close Academy paddling locations for repairs, general maintenance, refurbishment or health and safety emergencies. This does not include emergency situations for which the Mauritius Paddling Academy may be fully or partially closed.



- The obligation to pay dues is not dependent upon the availability of Mauritius Paddling Academy facilities. Repairs, maintenance, safety or special events may require the restriction of use or closing of various areas from time to time. Dues will not be reduced or suspended during the time when such facilities are not available.



# Paddling Programs

`A`ohe Hana I Nele I Ka Uku – There Is No Reward Without Work.

We encourage everyone to work hard to attain your personal as well as the Academy goals and you will be rewarded in many ways in your life.

Ikaika I Ka Lokahi – “Strength In Unity”

We are much stronger as one cohesive unit than as a group of individuals.

---

## Newcomer programme

- The Newcomer Program is part of Mauritius Paddling Academy’s recruitment efforts. New members are always welcome and may include veteran paddlers or paddlers who have never tried it. Outrigger and dragon boat paddling is for anyone who loves great fun and exercise, who enjoys being on the ocean, and who wishes to experience a water sport with a lengthy and rich tradition in Hawaiian and Polynesian cultures. No previous experience is necessary, although ability to swim is required and knowledge of the water through other water sports can be helpful.
- Newcomers should wear appropriate clothing such as swim trunks/shorts and synthetic fibre shirts since paddlers can get wet. Depending on weather and time of day, also bring a hat, sunglasses, wind proof jacket, and wear sun block. Canoes, dragon boats, paddles, life jackets and a safe place to store belongings are provided.

---

## Recreational programme

- Recreational sessions are aimed at developing and implementing programs designed to meet the needs of individuals engaged in the non-competitive aspects of paddling. Recreational workouts are held one to three times per week and may be more frequent, as daylight and weather conditions allow.
- The recreational paddle sessions allow for social paddles, workouts for non-racing paddlers, and the opportunity for racing paddlers to keep their skills during the off-season. While newer paddlers are generally welcome they are encouraged to develop skills through one of the new paddler programs.



---

## Racing programme

- Coached racing sessions are held to develop and promote paddle sport athletic competition at all levels. Coached sessions are held up to three times per week for each of the programs during the pre-race and racing season. Sessions are typically 2 hours in length or longer and are led by the head coach or the division coaches.
- Coached workouts for youth paddlers are held as demand warrants. Instruction programs designed to introduce, inform, and train paddlers of all skill levels in all aspects and areas of paddling.

# Paddling Locations

## Port Chambly Boathouse

To find the boat house turn right after entering the security gate.

Keep bearing right and follow the road down the hill until you reach the boathouse.

### Parking:

There is some space to park at the boathouse, but it is limited to about 4 cars. There are other parking places available including the main hotel car park. It is about a 5 min walk down to the boathouse.

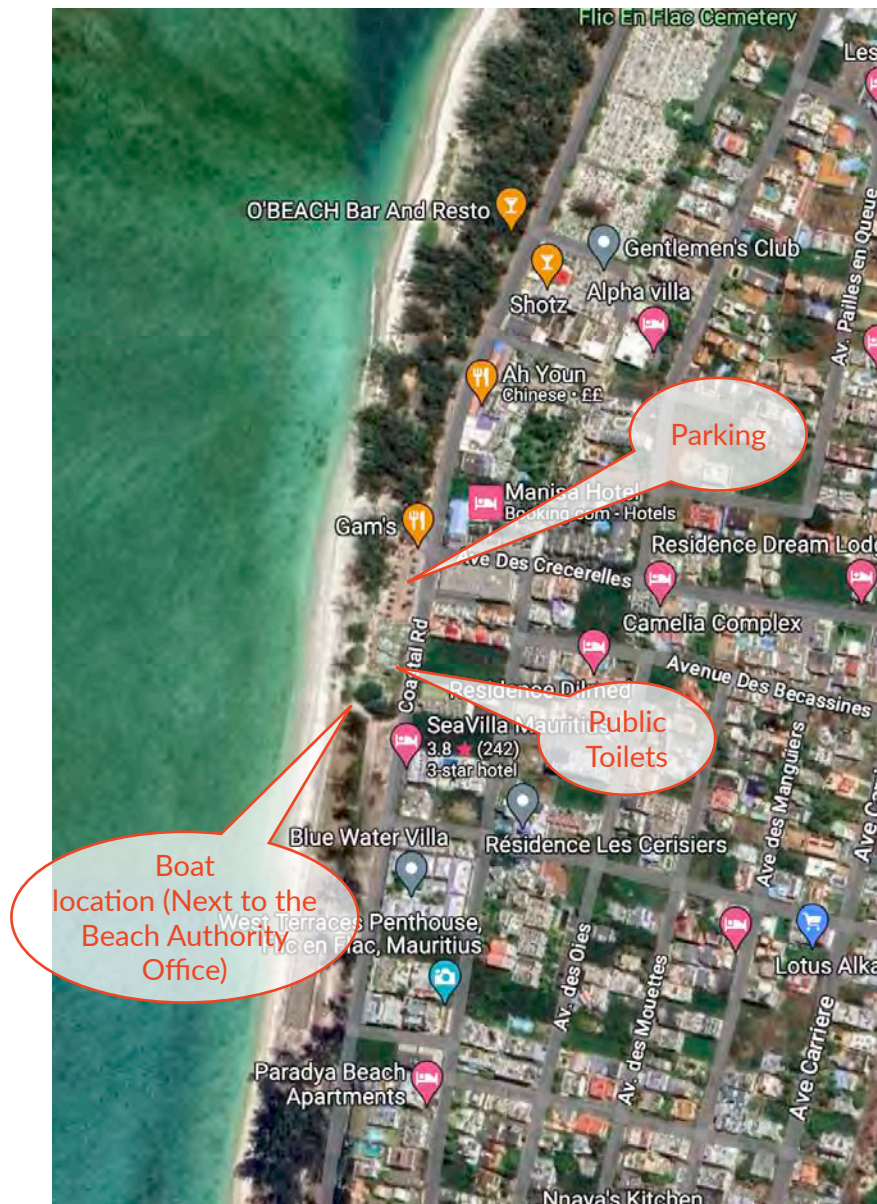


## Venue coming soon, Flic en Flac

To find the boat find the Beach Authority office. The boat is stored on the south side of the office.

### Parking:

There is a public carpark right on the beach. It is a 50m walk to the boat storage location. There are also Beach Authority toilets near by.



## Pointe Jerome Youth Centre

The Pointe Jerome youth centre has 2 boats. The boats are located near to the sea access. There are toilets available on site.

